



SPSS Statistics 17

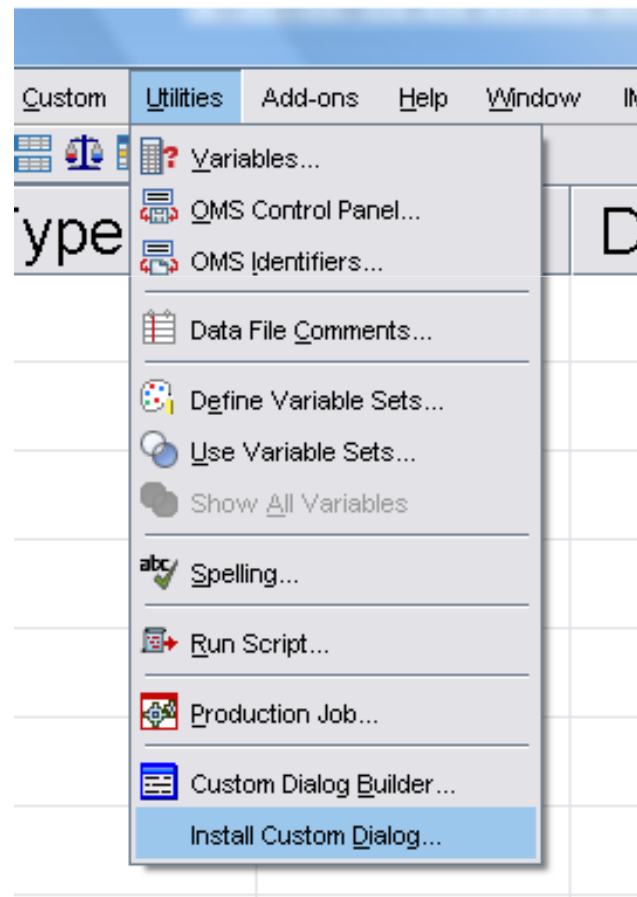
Custom Dialog Builder

“Build your own procedures...”

SPSS Statistics 17.0

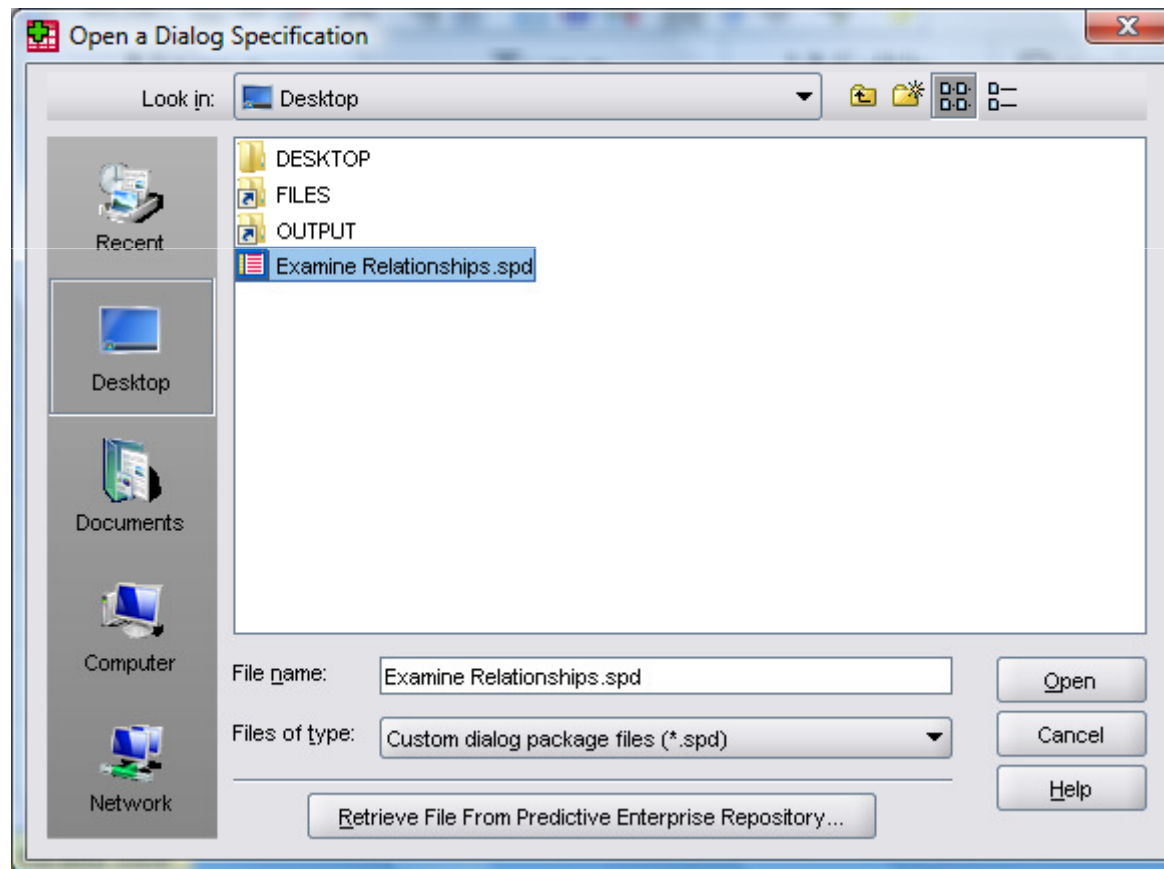
Examine Relationships Dialog

- Choose Install Custom Dialog from the Utilities Menu in SPSS Statistics



Examine Relationships Dialog

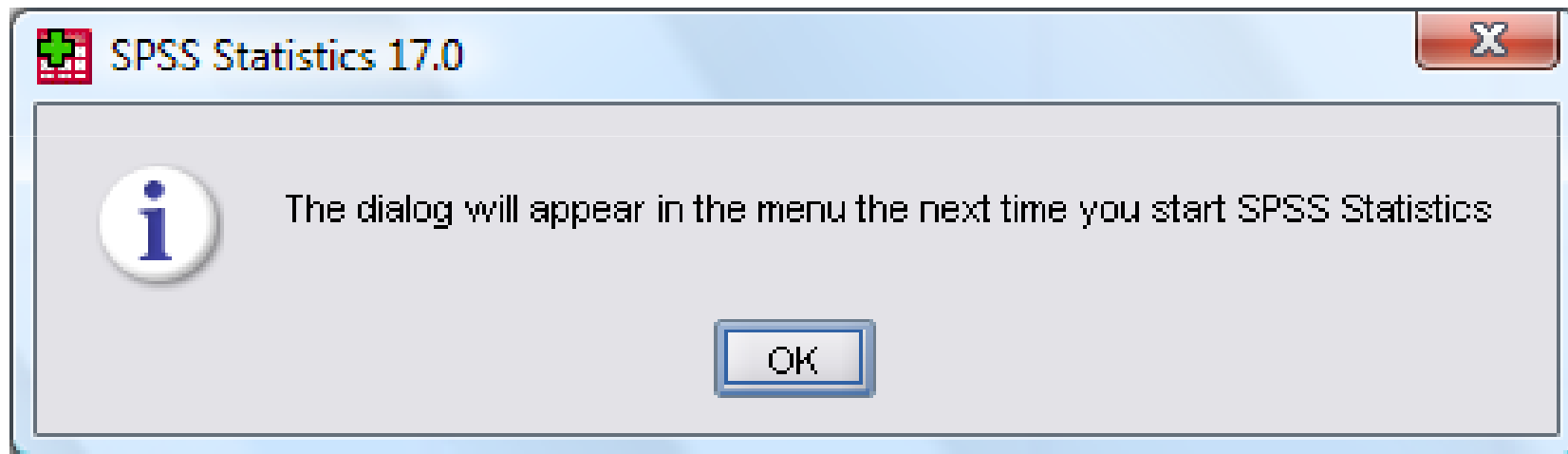
- Locate Examine_Relationships.spd





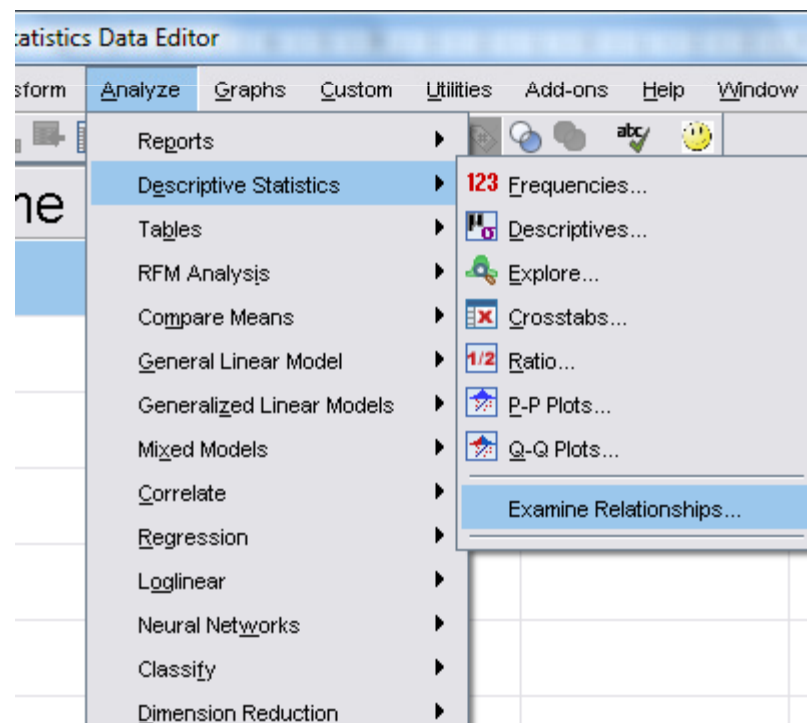
Examine Relationships Dialog

- You will be asked to restart SPSS Statistics 17.0



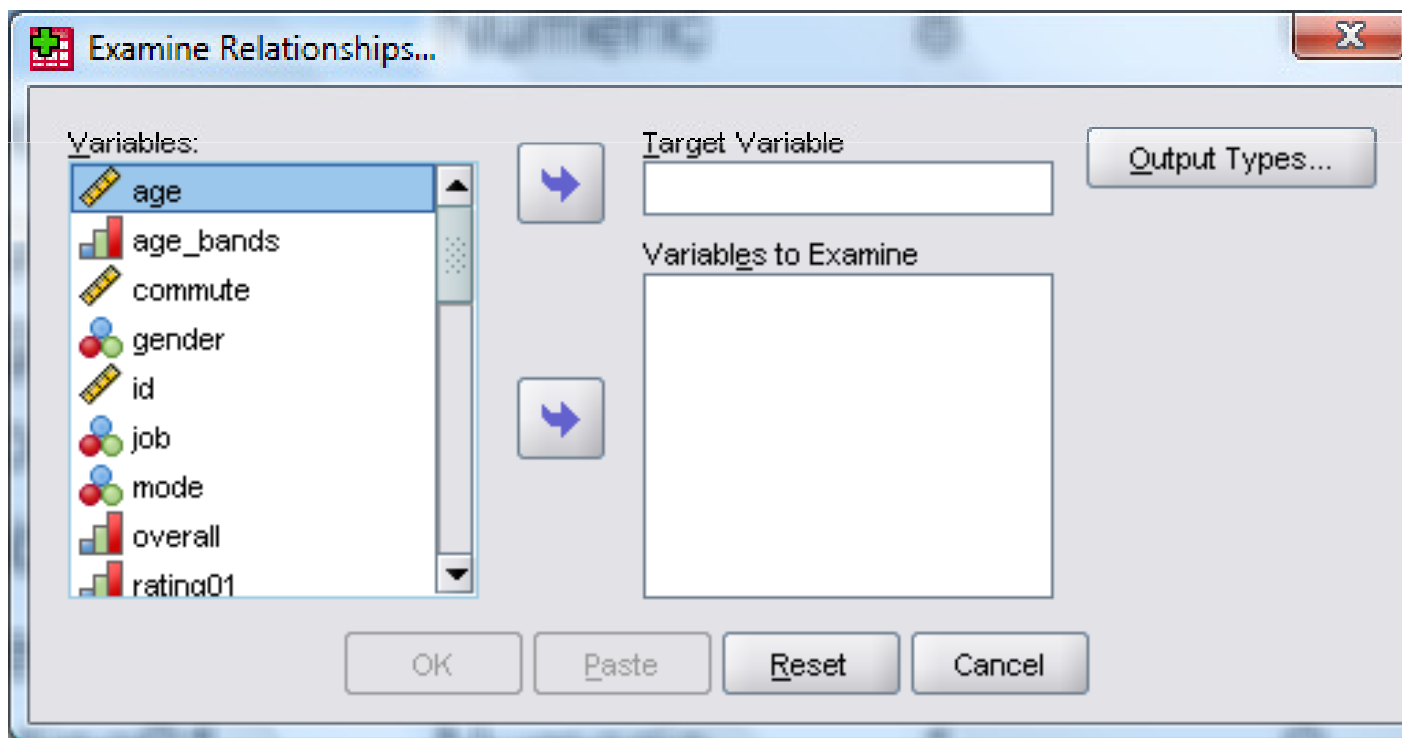
Examine Relationships Dialog

- On restarting SPSS Statistics 17.0, you can find the menu under Analyze...Descriptive Statistics...Examine Relationships...



Examine Relationships Dialog

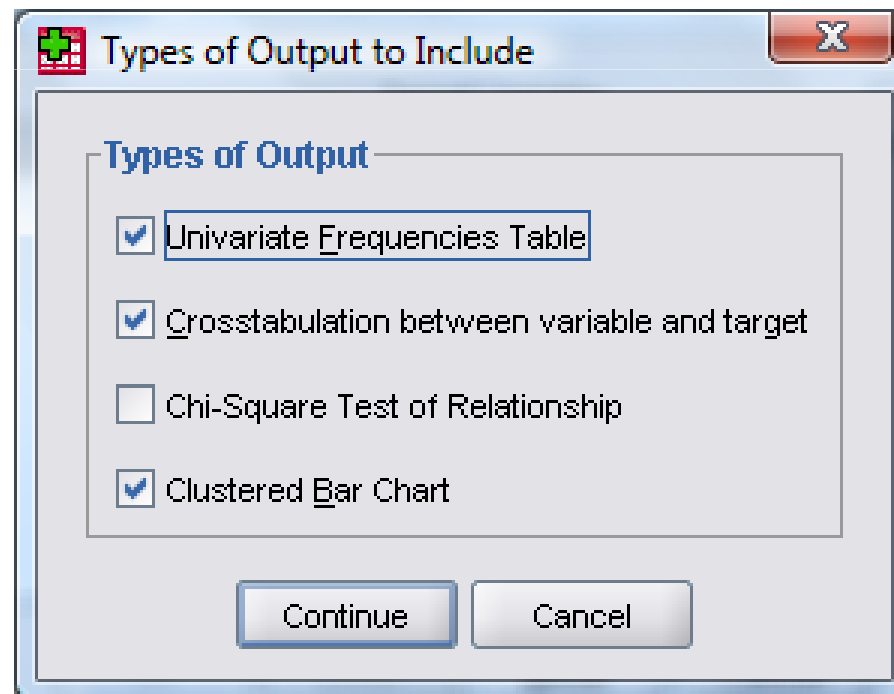
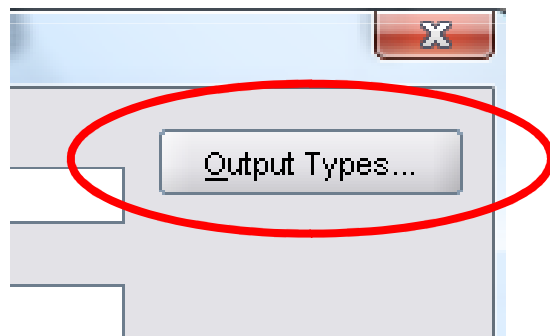
- *Examine Relationships will take a list of Categorical* (Nominal/Ordinal) variables and examine them, specifically with regard to their relationship with a target categorical* variable.*



* Scale variables are not allowed

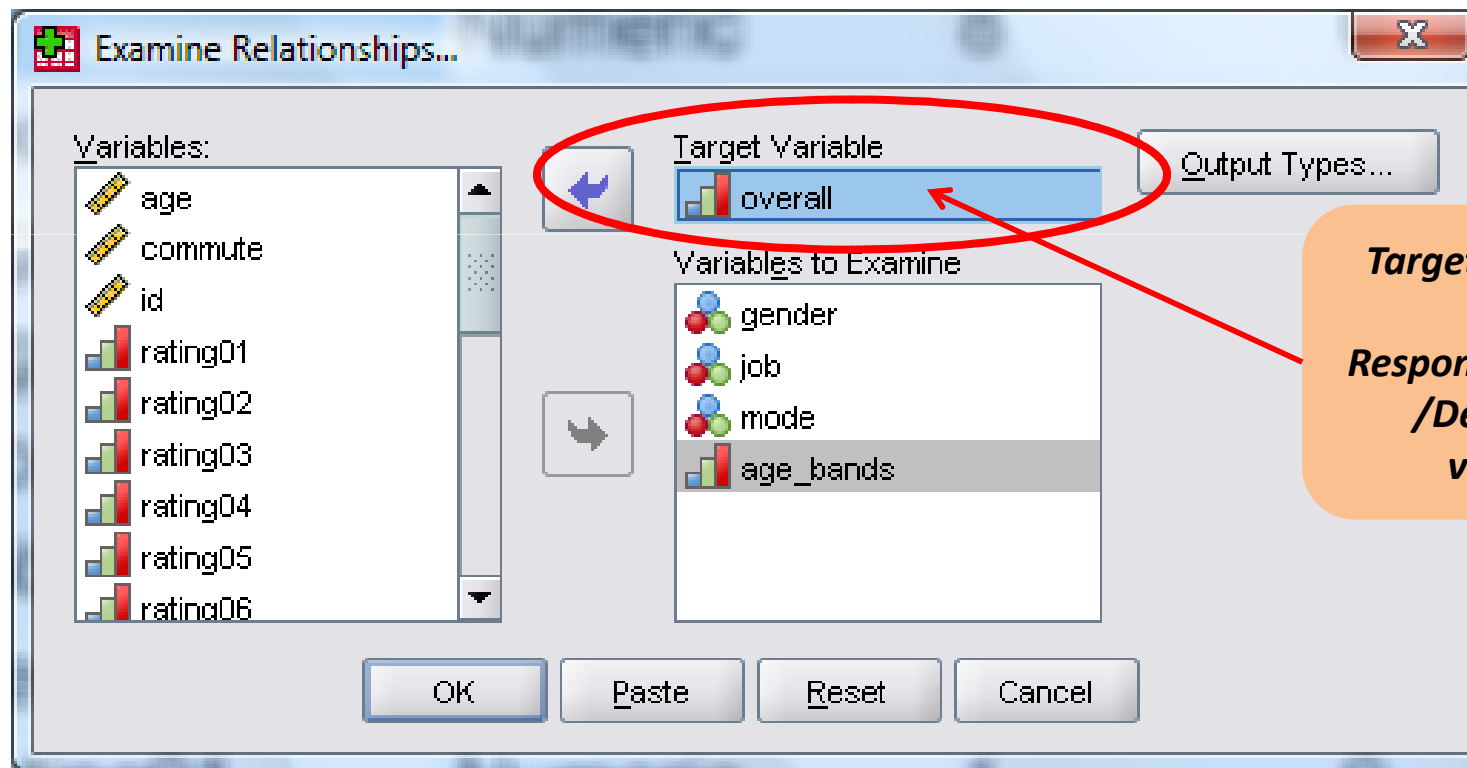
Examine Relationships Dialog

- You can choose to include any combination of Frequencies/Crosstabs/Chi-Square/Clustered Bar Charts in your output.*



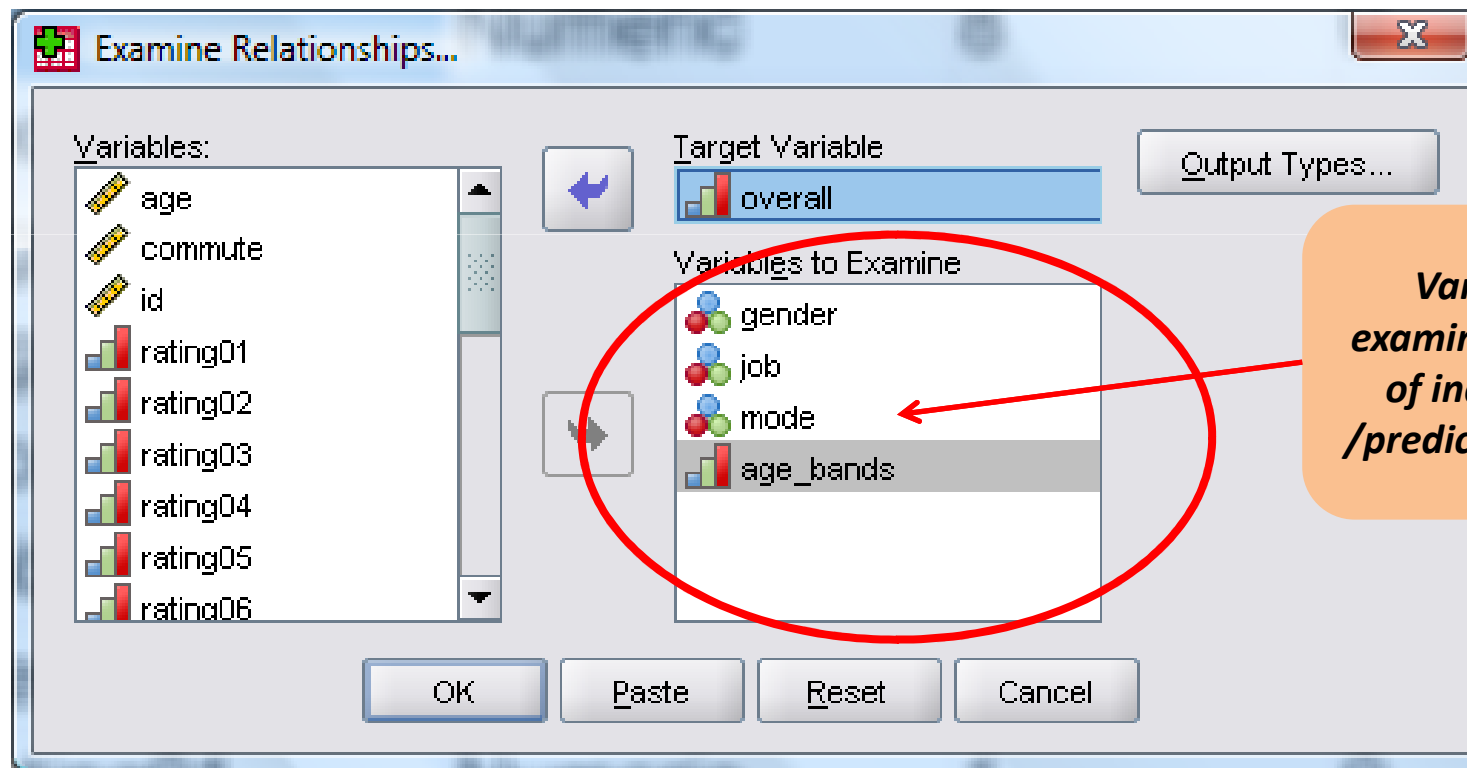
Examine Relationships Dialog

- Specify the variables to use...



Examine Relationships Dialog

- Specify the variables to use...



***Variables to
examine is your list
of independent
/predictor variables***

Examine Relationships Dialog

- Click OK to run...

The screenshot shows the SPSS 'Examine Relationships' dialog box. The 'Variables' list on the left includes 'age', 'commute', 'id', 'rating01', 'rating02', 'rating03', 'rating04', 'rating05', and 'rating06'. The 'Target Variable' field contains 'overall'. The 'Variables to Examine' list is empty. The 'OK' button is circled in red. An inset window titled '*Output1 [Document1] - SPSS Statistics Viewer' displays a bar chart titled 'Graph' showing the percentage of 'Male' and 'Female' respondents for different overall ratings. The Y-axis is labeled 'Percent' and ranges from 20.0% to 40.0%. The X-axis represents the overall rating categories. The legend indicates that blue bars represent 'Male' and green bars represent 'Female'.

Overall Rating	Male (%)	Female (%)
1	24.0	26.0
2	38.0	34.0
3	26.0	21.0