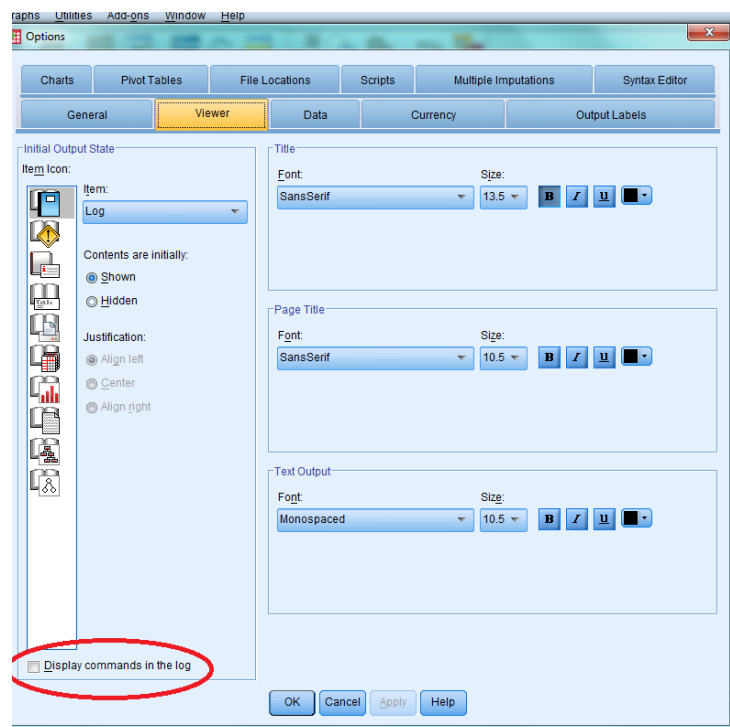


# Disabling syntax in the output

By default SPSS will show the syntax in the output. Syntax is the programming statements that correspond to the menu choices that you make. Like any programming language, it is somewhat cryptic. When you have a lot of SPSS output, it's not always clear how you got the output. Showing syntax in the output can help. If you only have a small amount of output or you have no interest in syntax, disabling syntax may be something that you wish to do.

To prevent syntax from displaying in the output, click edit->options from the menu and click on the Viewer tab.



Click on the Display commands in the log check box in the lower left hand corner so that the box is unchecked. Then click on the OK button.